

# Lives are lost when there is no objective calm review of reality

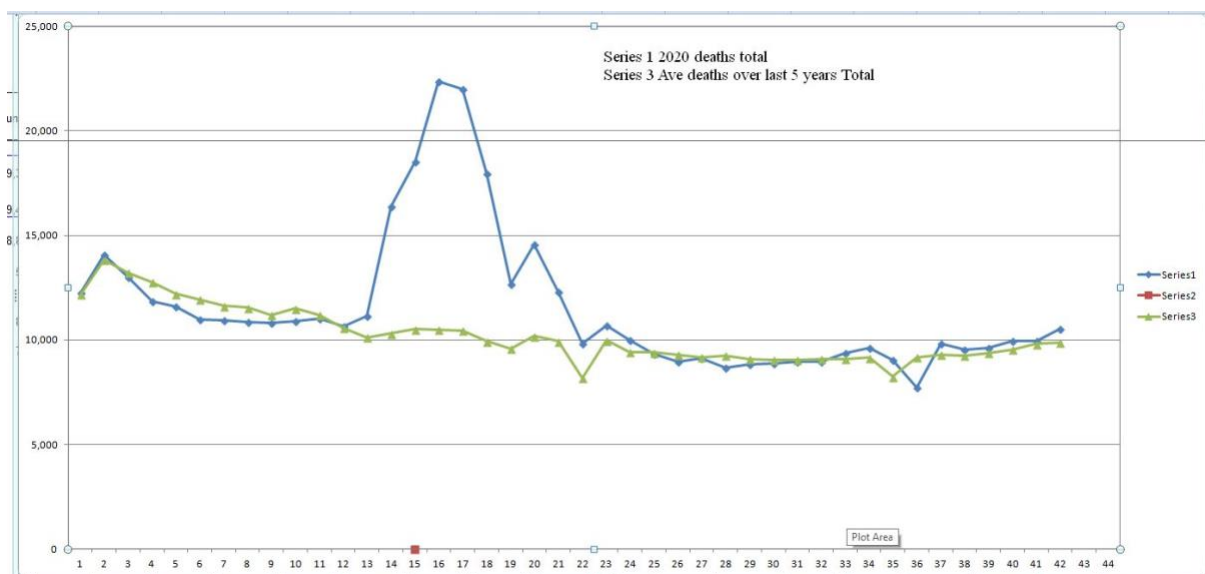
Lives are lost when other medical services are suspended. Lives are ruined by depression and domestic violence which accompany lockdowns. Livelihoods are destroyed and countless families impoverished with future generations left to bear the costs of this ruinous policy. Liberty is suspended as the government rules by decree. [Parliament is side-lined and its constitutional role seriously diminished](#) .

Lockdown is not only a cruel and blunt instrument for dealing with Covid-19, it is singularly ineffective. That's why we are facing a second lockdown so soon after the first. We're told that hospitals are about to be overwhelmed. But how much confidence should we have in epidemiological models when their forecasting record to date has been so poor?

Evidence from around the world reveals no correlation between lockdowns and coronavirus fatalities. In fact Peru, the country with the highest fatality rate, had one of the earliest and strictest lockdowns. By contrast Sweden, which had no lockdown, has suffered no excess deaths this year. A policy of '[focused protection](#)' for the vulnerable offers a viable alternative approach to a second lockdown.

We have reached a critical moment in our country's history. If you truly care for the health and welfare of the nation, or are concerned about the future of Parliament, our constitution and liberties, you must reject this second lockdown.

I have taken the trouble to analyse the ONS Data. This graph is based on it.



As you can see current death tolls are following the five year average quite closely, despite the NHS being 'closed' to many ill patients due to CV19 preparedness. That in itself has provoked many thousands of unnecessary early deaths both in care homes as well as in oncology and other departments of medicine. Yet still the deaths are to be expected as they are tracking the average.

**THERE IS CURRENTLY NO PANDEMIC OR ANY SIGNS OF ONE. There are just deaths in the usual expected numbers.**

The huge excess deaths around weeks 13-21 came after the peak of the CV19 event and many were undoubtedly **caused** by Lockdown. Since week 22 we are back to near normal death rates after 22 plus further weeks.

I call on every reader to review the facts and carry out your own risk assessment of what another LOCKDOWN will do to the nation's health and economic wellbeing. It only the old (me for example) or the very old and those with underlying morbidity that are at risk. They can use their own common sense and act according to their own priorities.

Roger Wright-Morris

<https://briefingsforfreedom.co.uk/>

3 November 2020